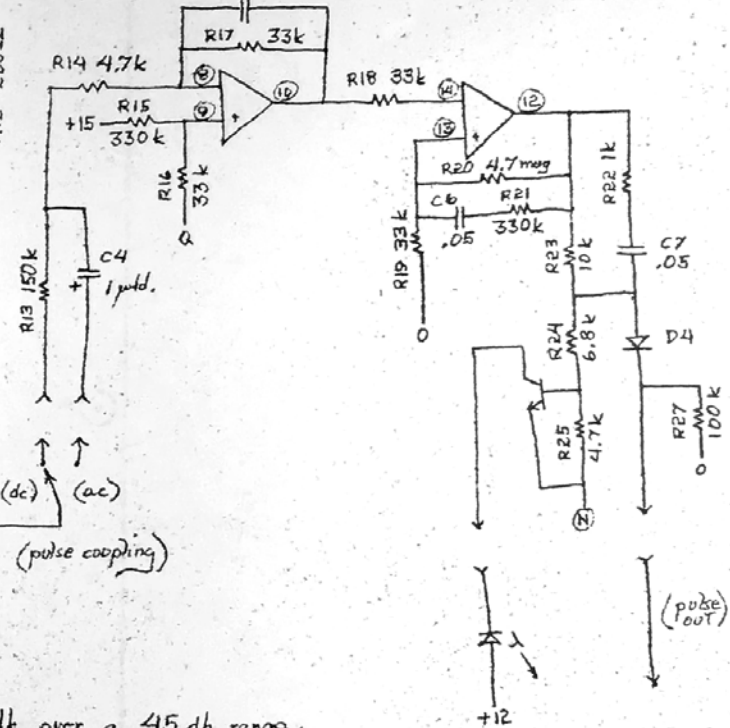
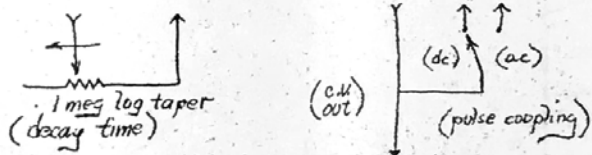
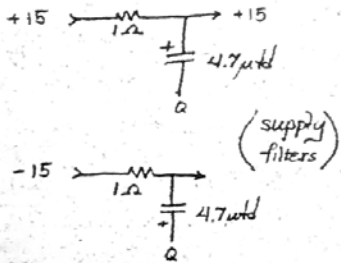
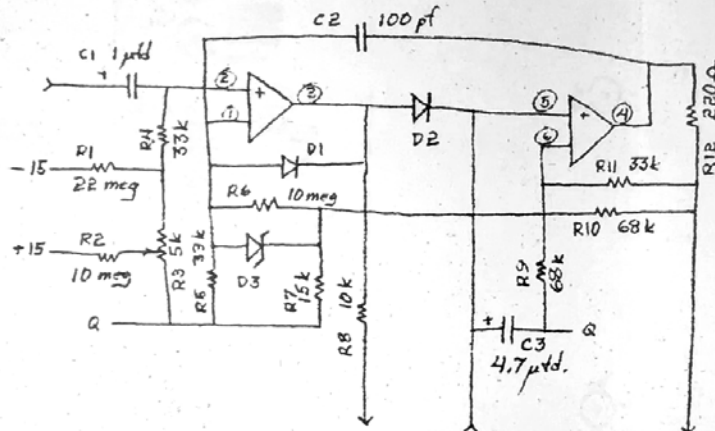


- D1, 2, 4 1N457
- D3 1N5228 B
- IC 1 4136
- G1 2N3566



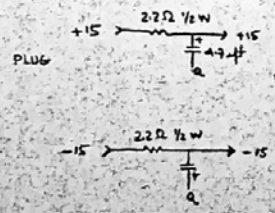
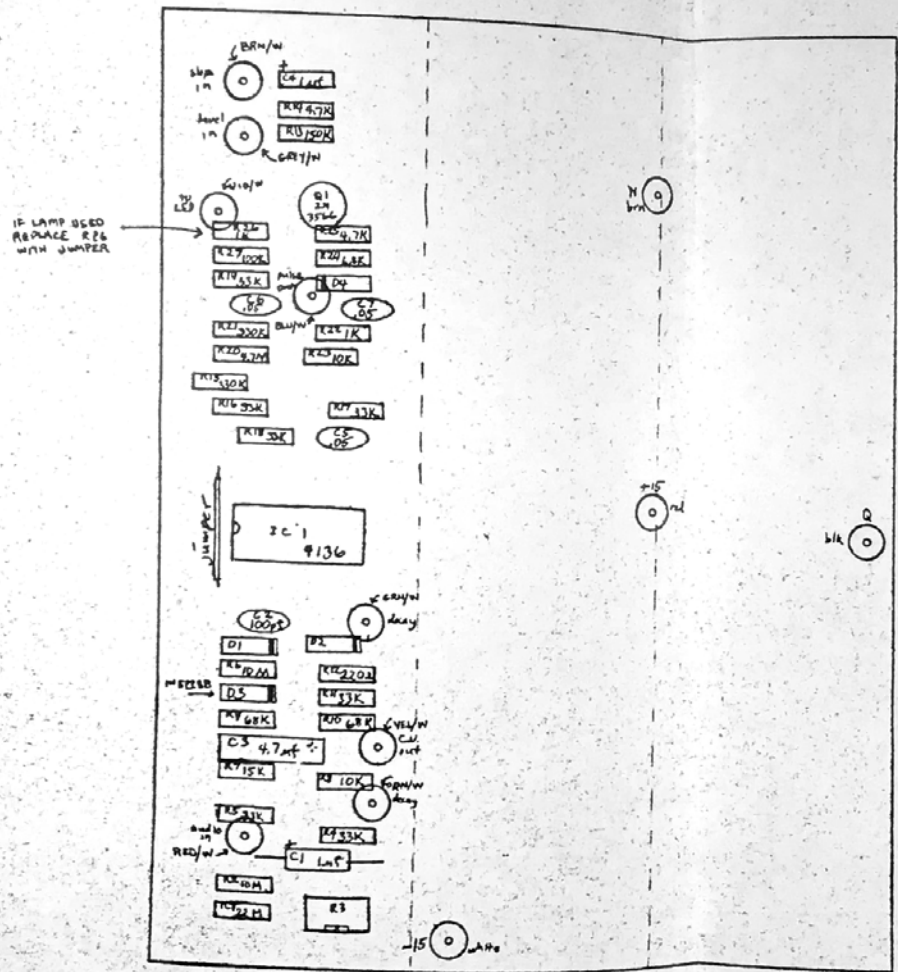
sens: 1V p-p for max (13.5V) output.
 decay time: .1 to 5 seconds
 response curve tracks gate (E92) within 2db over a 45 db range.

ENTIRE
 CIRCUIT
 X 3

BUCHLA & ASSOCIATES
 200 series D.B.
 SCH; MODEL 230 A
 TRIPLE ENVELOPE FOLLOWER
 10/4/74 B 2300 A

DATE	BY	REVISION RECORD	AUTH	CHK	CHK

A 1055 3



TOLERANCES EXCEPT AS NOTED	Buchla & Associates		
DECIMAL	200 Series	SCALE	DRAWN BY
±			APPROVED BY
FRACTIONAL	TITLE		
±	230A Triple envelope generator		
ANGULAR	DATE	DRAWING NUMBER	
±		2301A	